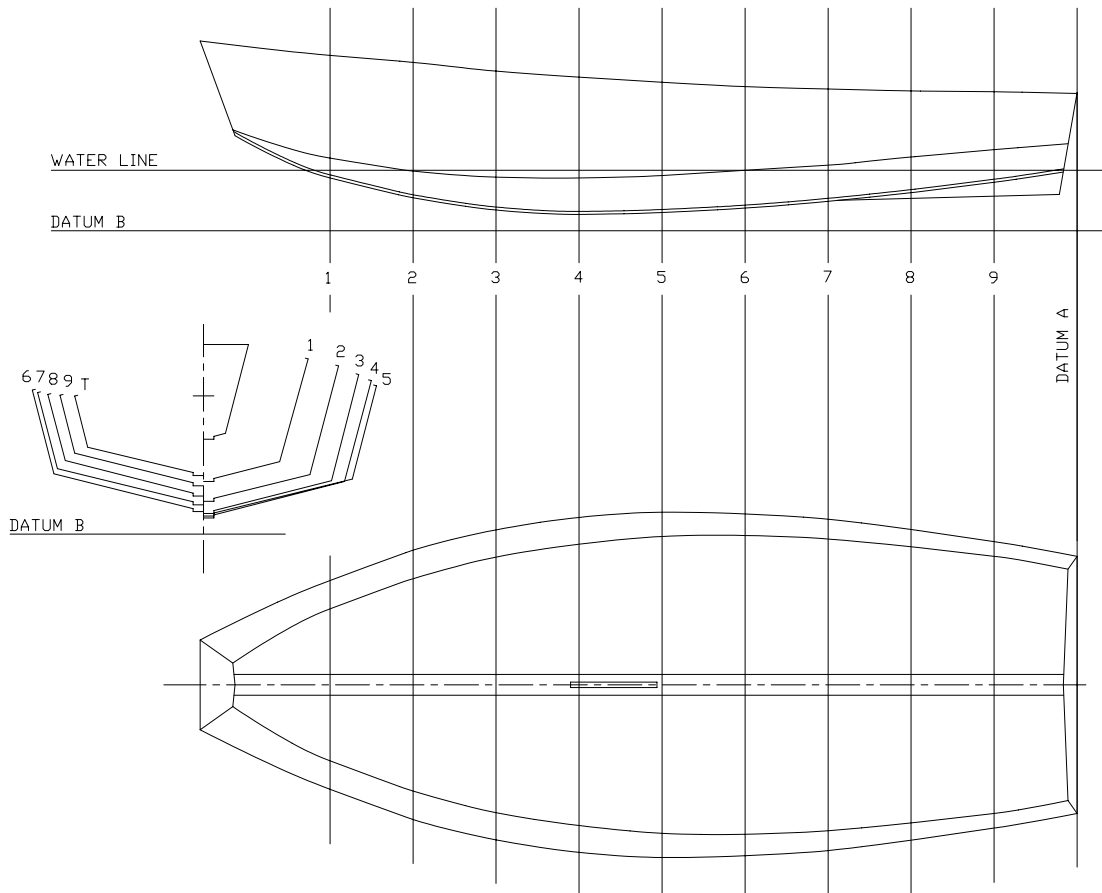


Measurement Plan No 1

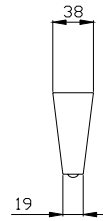
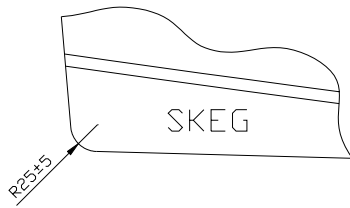
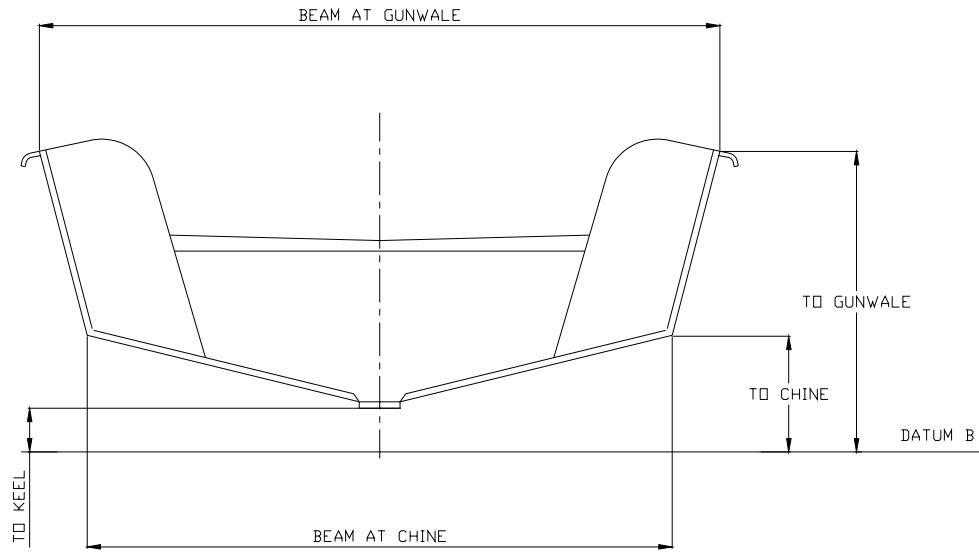


SECTION NUMBER	LOCATION OF SECTION FROM UPPER AFT EDGE AT TRANSOM	MEASUREMENTS FROM DATUM LINE 'B'			MEASUREMENTS OF BEAM AND KEEL TO OUTSIDE OF SKIN	
		TO KEEL	TO CHINE	TO GUNWALE	BEAM AT GUNWALE	BEAM AT CHINE
FORE TRANSOM	3220	-	-	680 - 707	330	-
FORE TRANSOM	3100*	-	359 - 383*	-	-	152 - 168*
FORE TRANSOM	3092*	331 - 361*	-	-	-	-
1	2743*	184 - 208*	267	645	768	559
2	2438	121	219	619	991	781
3	2134*	76*	189 - 205*	575 - 599*	1140	928 - 952*
4	1829	60	194	565	1232	1035
5	1524*	58 - 75*	195 - 211*	546	1270	1080 - 1104*
6	1219	83	222	530	1257	1099
7	914	108	241	521	1219	1073
8	610*	140*	263 - 279*	502 - 526	1140	1004 - 1028*
9	305	178	298	511	1054	946
DATUM LINE A	0*	-	-	490 - 520*	934 - 958*	-
AFT TRANSOM	34*	-	306 - 328*	-	-	839 - 863*
AFT TRANSOM	51*	202 - 224*	-	-	-	-

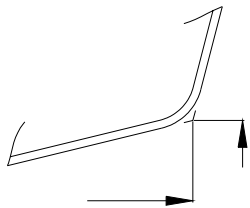
DIMENSIONS MARKED THUS * ARE INITIAL MOULD/MEASUREMENT POINTS
 ALL DIMENSIONS ARE IN MILLIMETRES

1.03.2002

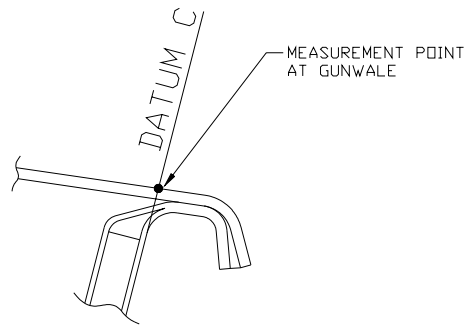
Measurement Plan No 2



SECTION THROUGH SKEG

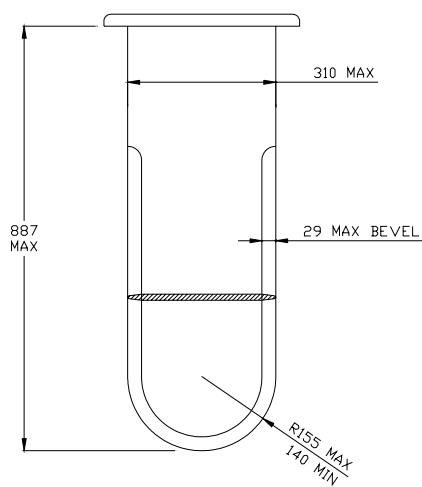
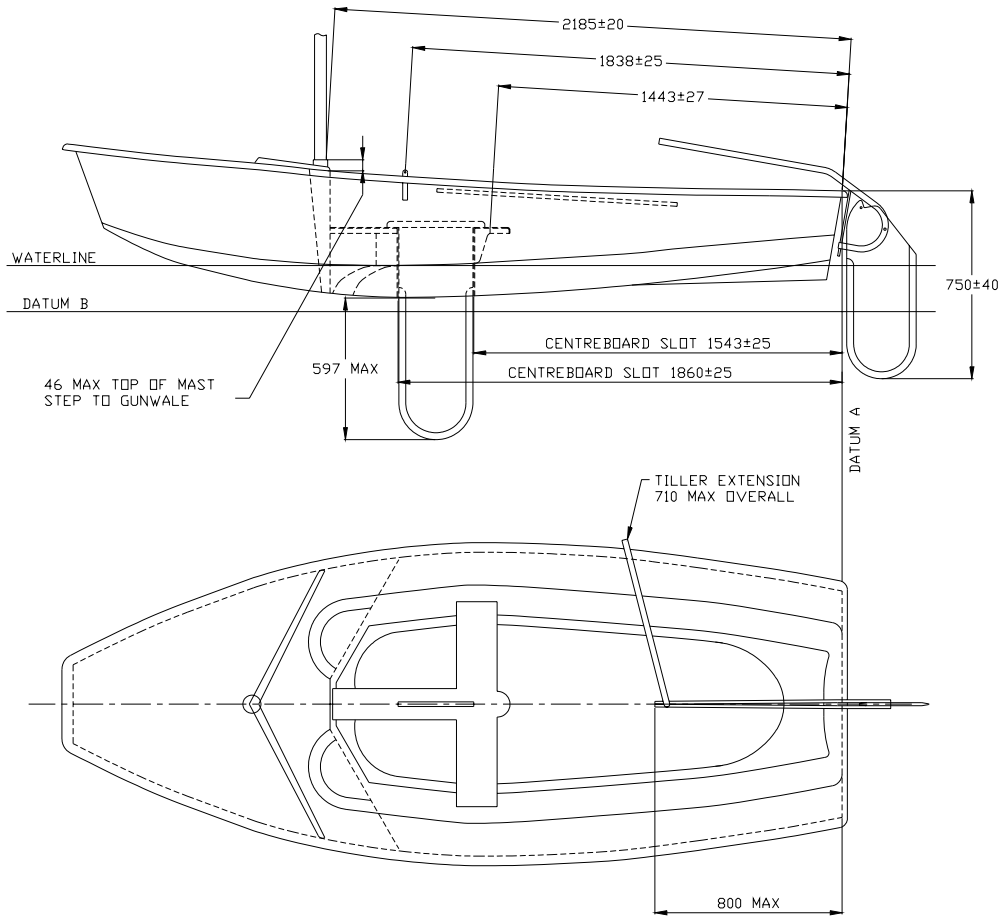


CHINE MEASUREMENT POINT

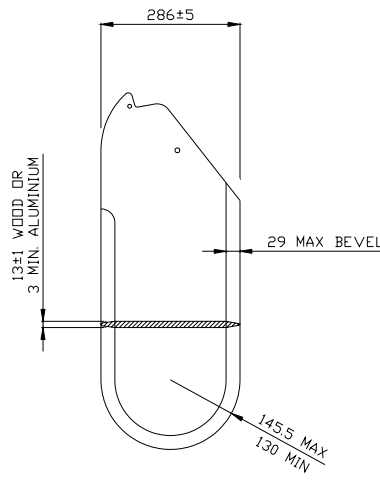


FLANGE SECTION

Measurement Plan No 3



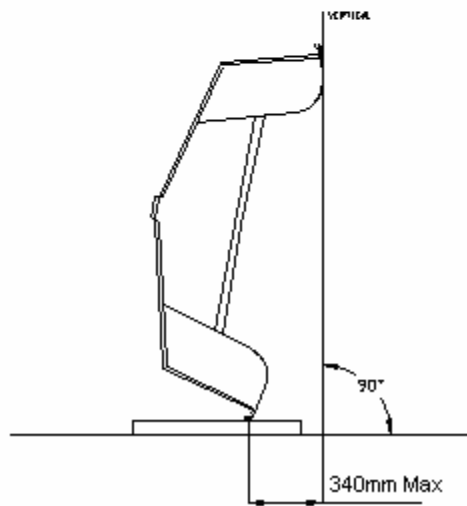
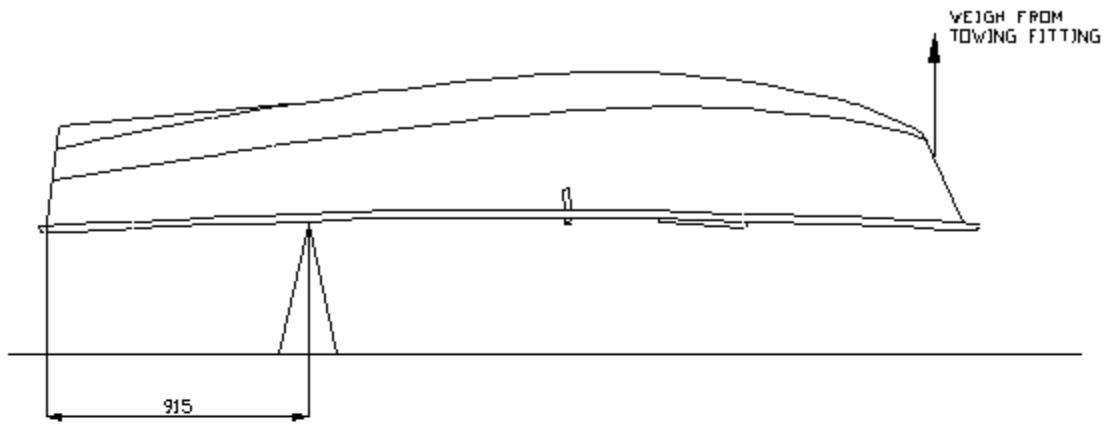
CENTREBOARD



RUDDER BLADE

1.03.2002

Measurement Plan No 6



1.03.2007